



Prop scars in turtle grass.

Help protect seagrass and maintain fish habitat:

Damaging seagrass with propellers destroys important bait and gamefish habitat.

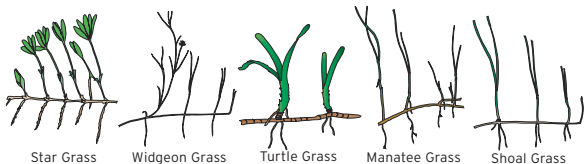
Seagrasses function as nurseries, bio-filters, a source of food, and a form of erosion control. Healthy habitat can support a larger number of shellfish and gamefish such as shrimp and red drum.



Help protect seagrass.

Boaters can minimize seagrass destruction by lifting their motors and drifting, poling, or trolling through shallow areas.

- When possible, avoid running your boat through shallow areas;
- Consider wind speed and direction;
- Check tide charts and weather forecast and create a float plan accordingly;
- Use deeper water or existing marked channels as preferred access whenever possible;
- Know your boat's limitations for running and takeoff depths.



LIFT



DRIFT



POLE



TROLL

For more information on seagrass, visit www.tpwd.texas.gov



Life's better outside.®



SEAGRASS CONSERVATION



Life's better outside.®

© 2015 TPWD PWD V3400-1101A (11/15)

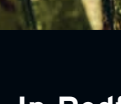
In accordance with Texas State Depository Law, this publication is available at the Texas State Publications Clearinghouse and/or Texas Depository Libraries.

TPWD receives funds from the USFWS. TPWD prohibits discrimination on the basis of race, color, religion, national origin, disability, age, and gender, pursuant to state and federal law. To request an accommodation or obtain information in an alternative format, please contact TPWD on a Text Telephone (TDD) at (512) 389-8915 or by Relay Texas at 7-1-1 or (800) 735-2989. If you believe you have been discriminated against by TPWD, please contact TPWD or the U.S. Fish and Wildlife Service, Office for Diversity and Workforce Management, 5275 Leesburg Pike, Falls Church, VA 22041.

COVER PHOTO: ©Jason Arnold, www.jasonarnoldphoto.com

Seagrass Protection Regulation

Protecting seagrass is important for good fishing.



Life's better outside.®

In Redfish Bay State Scientific Area it is illegal to uproot seagrass with a submerged propeller.



Boundary Map Inside >

Redfish Bay State Scientific Area

In Redfish Bay State Scientific Area it is illegal to uproot seagrass with a submerged propeller. (Class C misdemeanor fine up to \$500).

There are no closed zones; boat access is allowed throughout the scientific area. Electric trolling motors are exempt from the law.

