



TEXAS

PARKS &

WILDLIFE

CWD Management Plan Goals

- **Minimize CWD risks to the wild and captive white-tailed deer, mule deer, and other susceptible species in Texas.**
- **Establish and maintain support for prudent CWD management with hunters, landowners, and other stakeholders.**
- **Minimize direct and indirect impacts of CWD to hunting, hunting related economies, and conservation in Texas.**

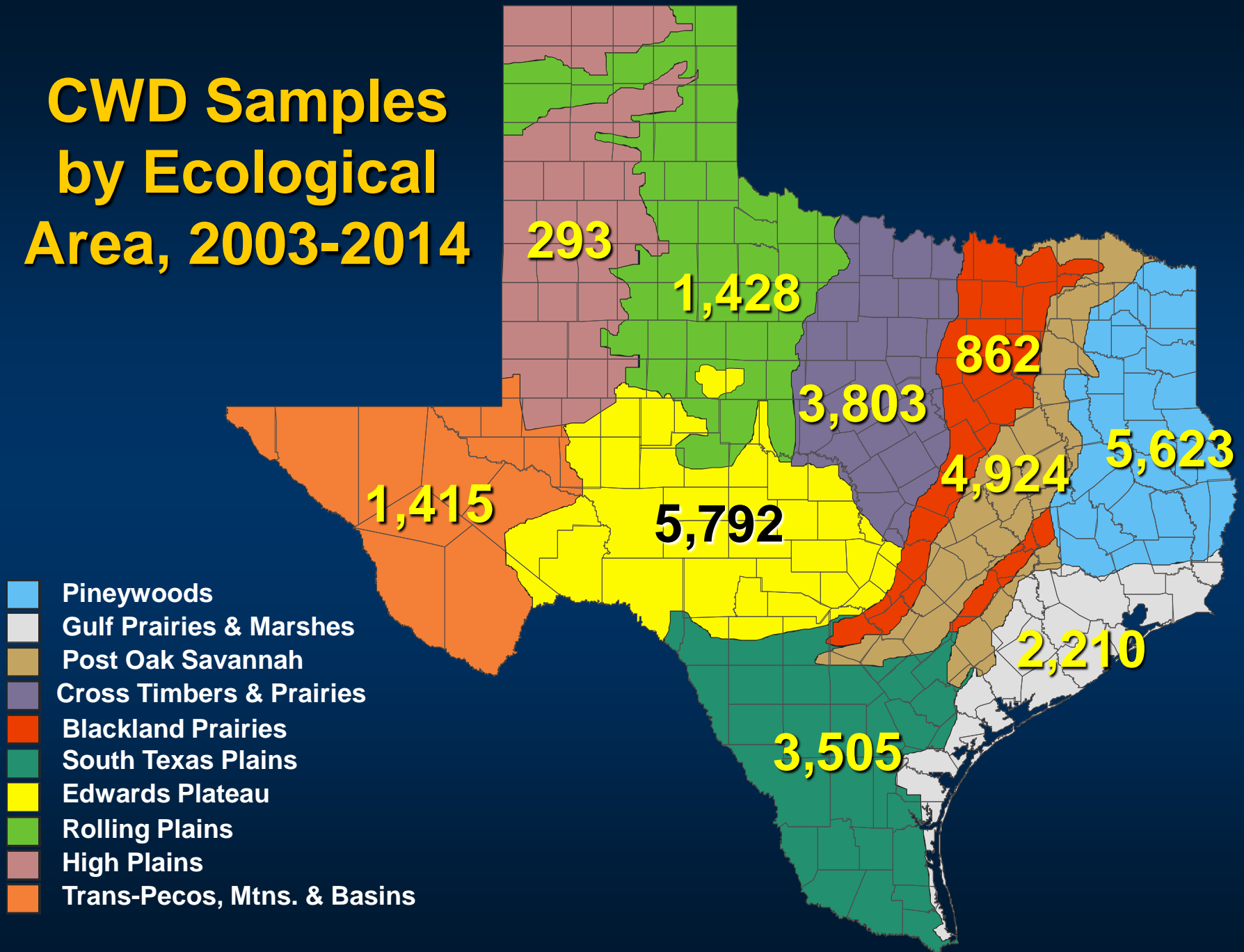
White-tailed Deer Statistics for Texas

- ~ 3.9 million free-ranging WT deer
- ~ 700K WT deer hunters
- ~ 600K deer harvested annually
- ~ \$3.6 billion economic output for all hunting
- ~ \$2.1 billion for deer hunting

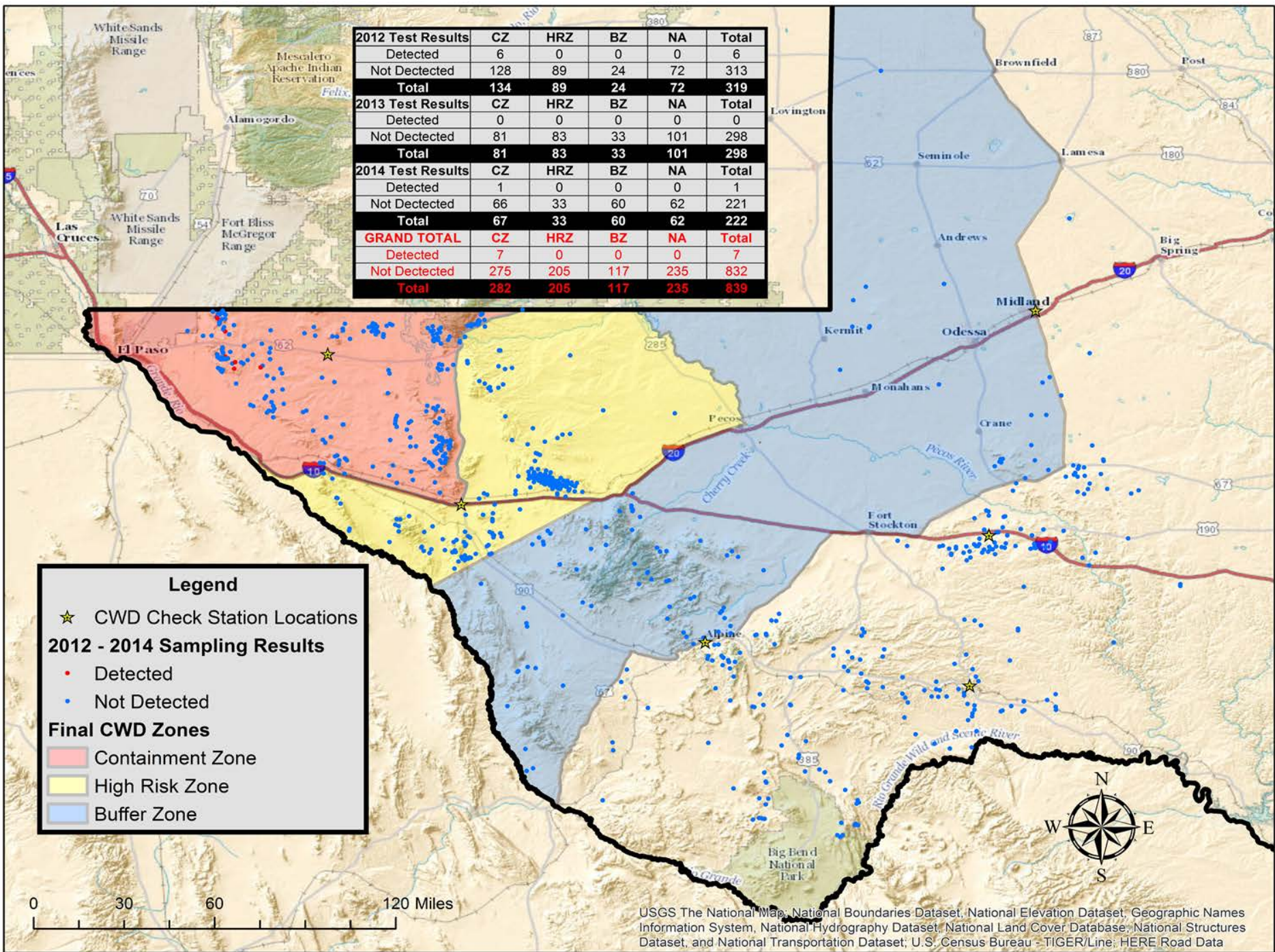
White-tailed Deer Statistics for Texas

- > 10,000 sites in MLD Program
- > 24 million acres in MLD Program
- > 1,300 deer breeding facilities
- > 110,000 deer in breeding facilities
- > 2,000 free-ranging deer moved annually by TTT permit
- > 160 DMP permittees

CWD Samples by Ecological Area, 2003-2014



2012 Test Results	CZ	HRZ	BZ	NA	Total
Detected	6	0	0	0	6
Not Detected	128	89	24	72	313
Total	134	89	24	72	319
2013 Test Results	CZ	HRZ	BZ	NA	Total
Detected	0	0	0	0	0
Not Detected	81	83	33	101	298
Total	81	83	33	101	298
2014 Test Results	CZ	HRZ	BZ	NA	Total
Detected	1	0	0	0	1
Not Detected	66	33	60	62	221
Total	67	33	60	62	222
GRAND TOTAL	CZ	HRZ	BZ	NA	Total
Detected	7	0	0	0	7
Not Detected	275	205	117	235	832
Total	282	205	117	235	839



Legend

- ★ CWD Check Station Locations

2012 - 2014 Sampling Results

- Detected
- Not Detected

Final CWD Zones

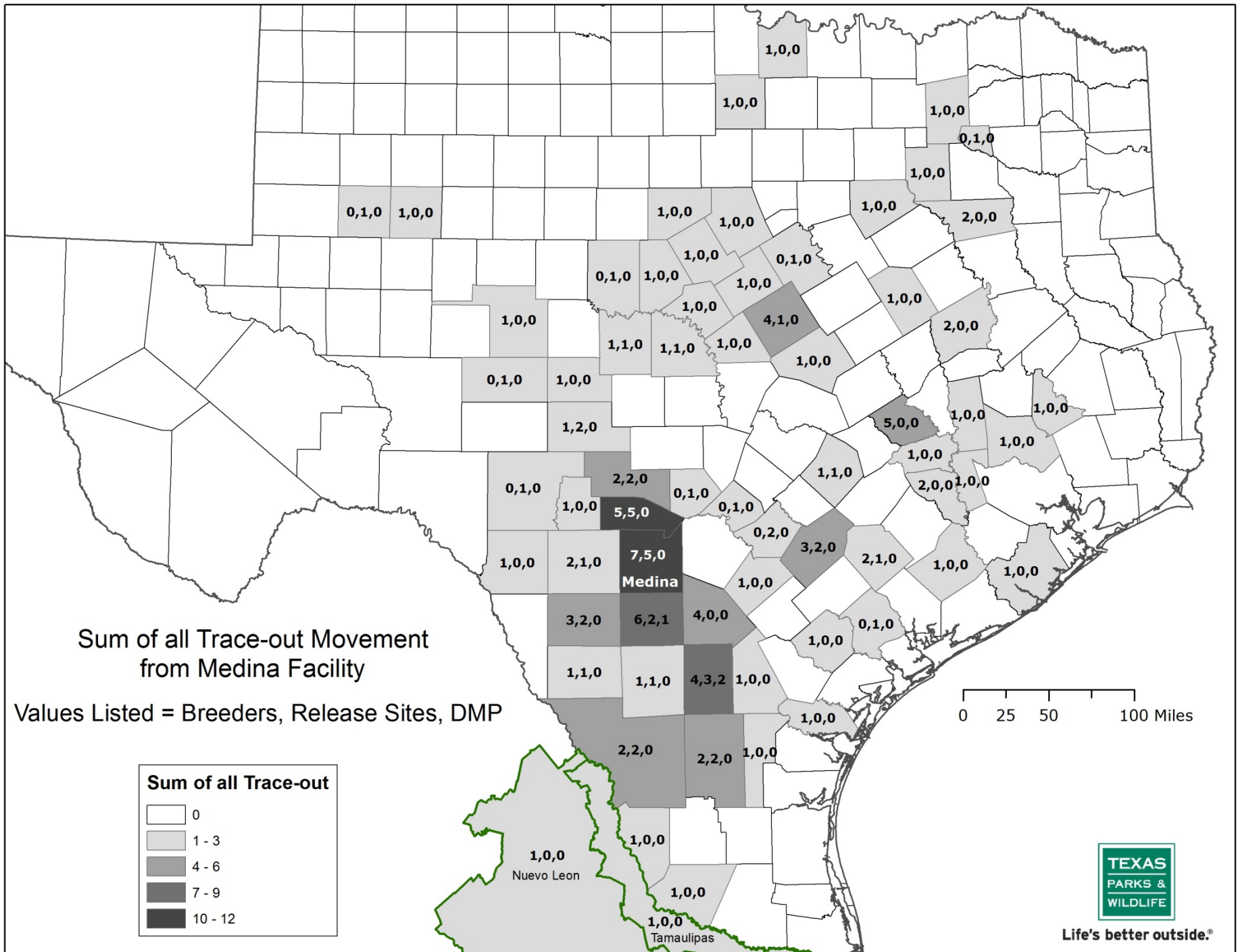
- Containment Zone
- High Risk Zone
- Buffer Zone

0 30 60 120 Miles

USGS The National Map, National Boundaries Dataset, National Elevation Dataset, Geographic Names Information System, National Hydrography Dataset, National Land Cover Database, National Structures Dataset, and National Transportation Dataset; U.S. Census Bureau - TIGER/Line; HERE Road Data

Trans-Pecos CWD Regulations

- Established a Containment Zone, High Risk Zone and Buffer Zone
- Mandatory Check Stations in Containment Zone
- Deer Movements are most restrictive in Containment Zone
- The conditions surrounding the W. Texas CWD positives are much different than the Medina County discovery



Sum of all Trace-out Movement from Medina Facility

Values Listed = Breeders, Release Sites, DMP

Sum of all Trace-out

- 0
- 1 - 3
- 4 - 6
- 7 - 9
- 10 - 12

0 25 50 100 Miles



Life's better outside.®

1,0,0
Nuevo Leon

1,0,0
Tamaulipas

7,5,0
Medina

1,0,0

1,0,0

1,0,0

0,1,0

1,0,0

0,1,0

1,0,0

1,0,0

1,0,0

1,0,0

1,0,0

2,0,0

0,1,0

1,0,0

1,0,0

0,1,0

1,0,0

1,0,0

1,0,0

2,0,0

1,0,0

1,1,0

1,1,0

1,0,0

4,1,0

1,0,0

1,0,0

2,0,0

0,1,0

1,0,0

1,2,0

0,1,0

2,2,0

0,1,0

0,1,0

1,1,0

3,2,0

2,1,0

1,0,0

1,0,0

0,1,0

1,0,0

5,5,0

0,1,0

0,1,0

0,2,0

1,0,0

2,0,0

1,0,0

1,0,0

1,0,0

2,1,0

7,5,0

3,2,0

6,2,1

4,0,0

1,0,0

1,0,0

3,2,0

2,1,0

1,0,0

1,0,0

3,2,0

1,1,0

1,1,0

4,3,2

1,0,0

1,0,0

1,0,0

0,1,0

1,0,0

1,0,0

1,1,0

1,1,0

4,3,2

1,0,0

1,0,0

1,0,0

1,0,0

1,0,0

1,0,0

2,2,0

2,2,0

1,0,0

1,0,0

1,0,0

1,0,0

1,0,0



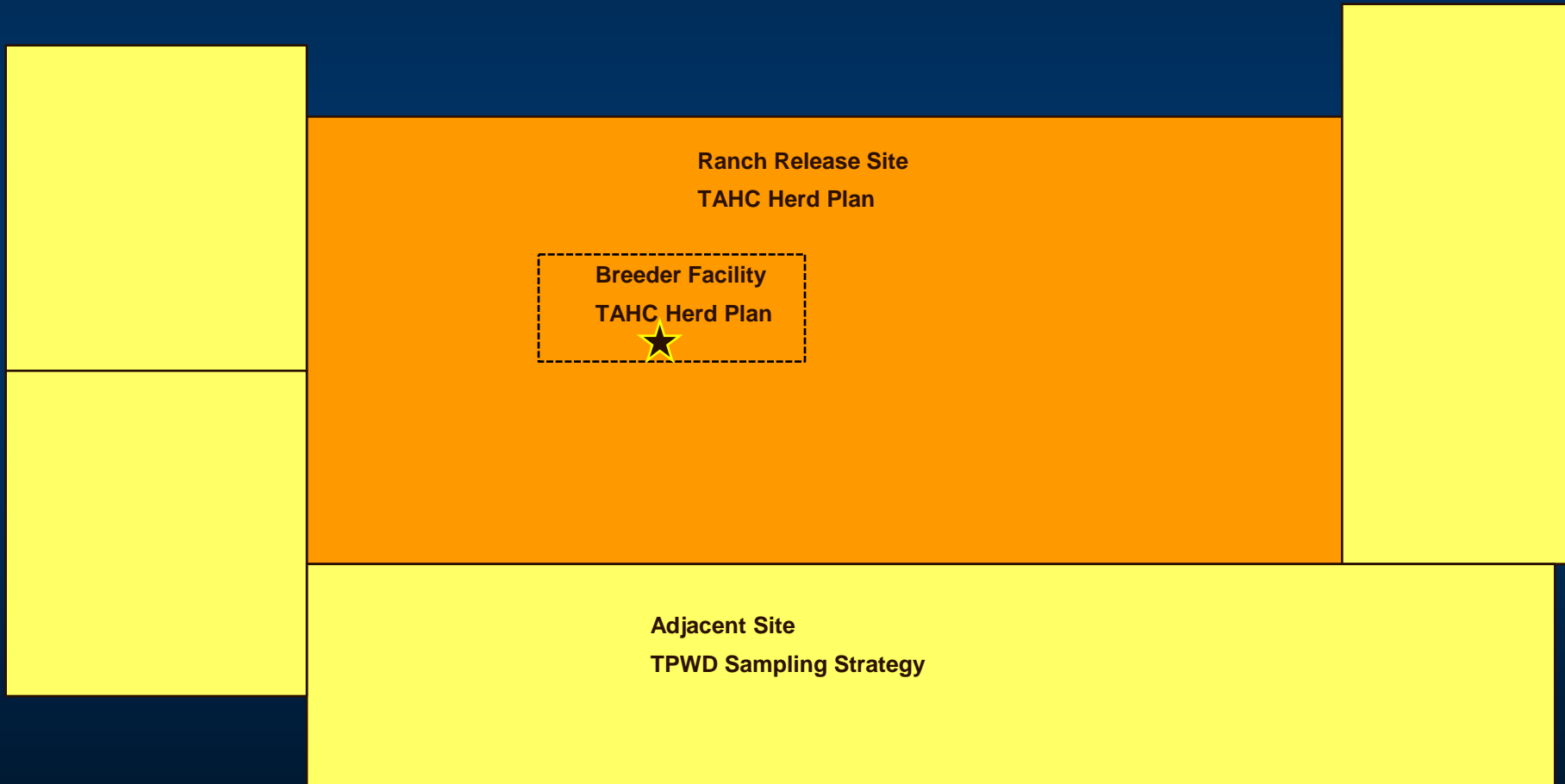
Content may not reflect National Geographic's current map policy. Sources: National Geographic, Esri, DeLorme, HERE, UNEP-WCMC, USGS, NASA, ESA, METI, NRCAN, GEBCO, NOAA, increment P Corp.

Gulf

Determining Distribution and Prevalence

- CWD Positive Sites and Exposed Sites
 - TAHC Herd Plans
- Other Free-Ranging Herds
 - TPWD and TAHC Regulations

Determining Distribution and Prevalence



CWD Sampling, Check-stations and Regulations

- CWD Positive Sites
 - Highest Risk
- Trace-Out and Trace-In Exposed Sites
 - Lower Risk

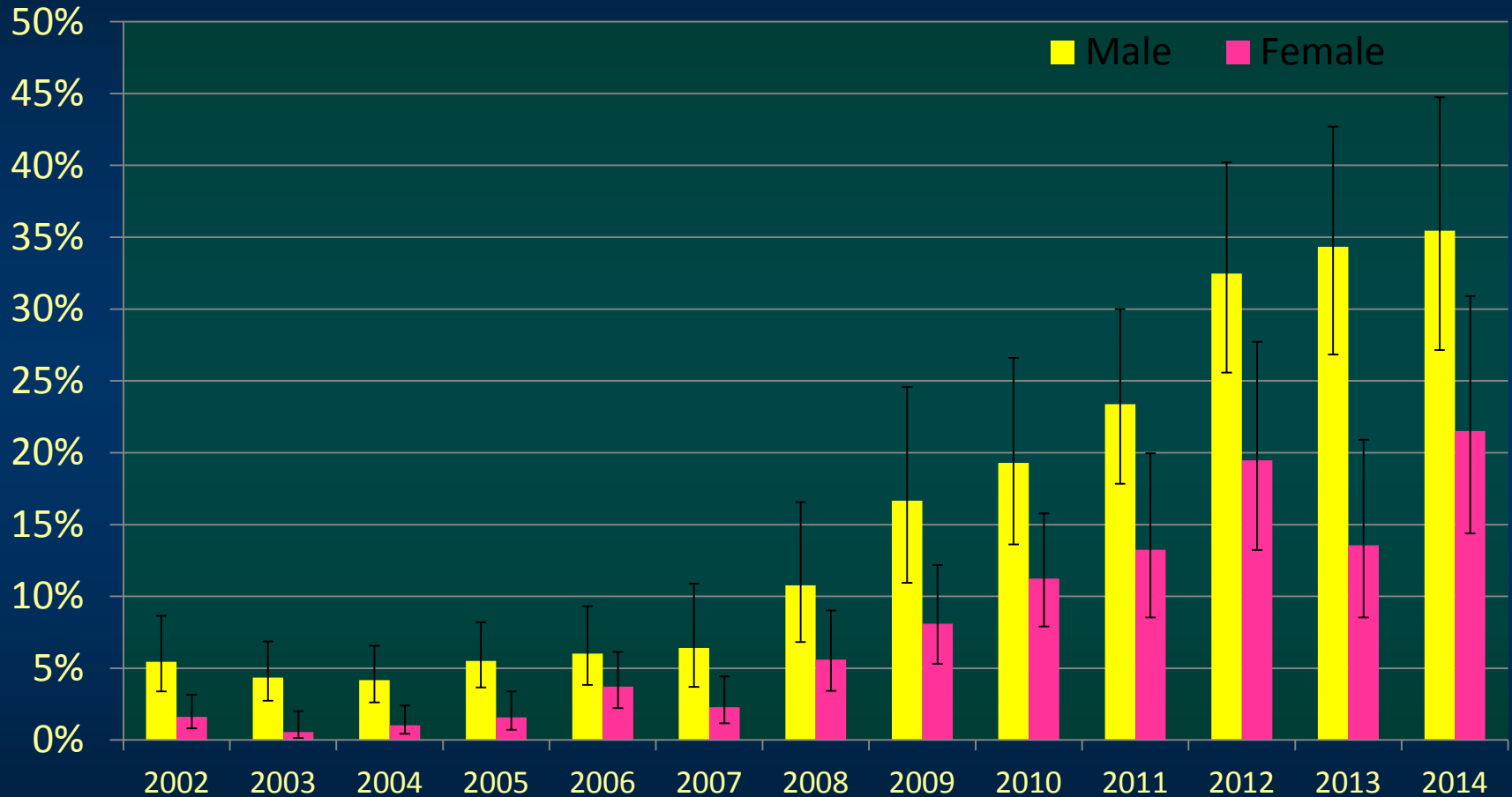
CWD Sampling and Check Stations

- Voluntary or mandatory submission of samples for a specified geography
- Mandatory sampling is usually in CWD zones in other states
- Voluntary sampling yields varied results

CWD Sampling and Check Stations

- Boosting CWD sample numbers
 - Pay or contract with processors and taxidermist
 - May include small fee (range \$5-\$10)
 - Taxidermist effective at targeting older age class bucks
 - Missouri, Illinois, Kansas, Ohio, New York
 - Sharp shooting
 - Has been used in Illinois and Wisconsin

CWD prevalence in Wisconsin's "Wyoming Valley"



Data: WI Department of Natural Resources

Carcass Movement Considerations

- No carcass movement restrictions currently
- Carcass movement restrictions are an option to consider
- Alternate “proof-of-sex” rules would be needed

Other Strategies Used by States

- Baiting Bans
 - 22 states with statewide bans
 - 9 with bans in selected areas or under selected conditions (CWD areas, etc.)
- Feeding bans
 - 9 states banned feeding statewide
 - 14 others have feeding restrictions

Live Deer Movement Considerations

- Captive Deer
 - Similar to other states
- Liberation of captive deer
 - Unique to Texas
- TTT and DMP
 - Unique to Texas

Live Deer Movement Considerations

- Captive Deer
 - In progress – TAHC Herd Plans
- Trace-out liberation sites
 - In progress – TAHC Herd Plans
- Breeder-to-Breeder and Breeder-to-Release
 - In progress
- TTT and DMP
 - Future deliberations

Breeder Deer Movements and Liberations

- Factors being considered
 - CWD testing history
 - Movement history
 - Connectivity to CWD-positive site
 - Fence status of liberation sites
 - Identification of liberated deer
 - TAHC herd status

Breeder Deer Movements and Liberations

- TAHC Certified Herd Status
 - Lowest Risk
 - In 6th year of monitoring
 - Annual inspections
 - 100 percent testing of all eligible mortalities
 - Cannot receive deer from herds of lower status

Future Deliberations and Timeline

- CWD Working Group and CWD Task Force
- September 22nd deadline to move breeder bucks with antlers
- October 3rd - Archery and MLDP Opener
- November 7th – General Season Opener

CWD Management Plan Goals

- **Minimize CWD risks to the wild and captive white-tailed deer, mule deer, and other susceptible species in Texas.**
- **Establish and maintain support for prudent CWD management with hunters, landowners, and other stakeholders.**
- **Minimize direct and indirect impacts of CWD to hunting, hunting related economies, and conservation in Texas.**



TEXAS

PARKS &

WILDLIFE