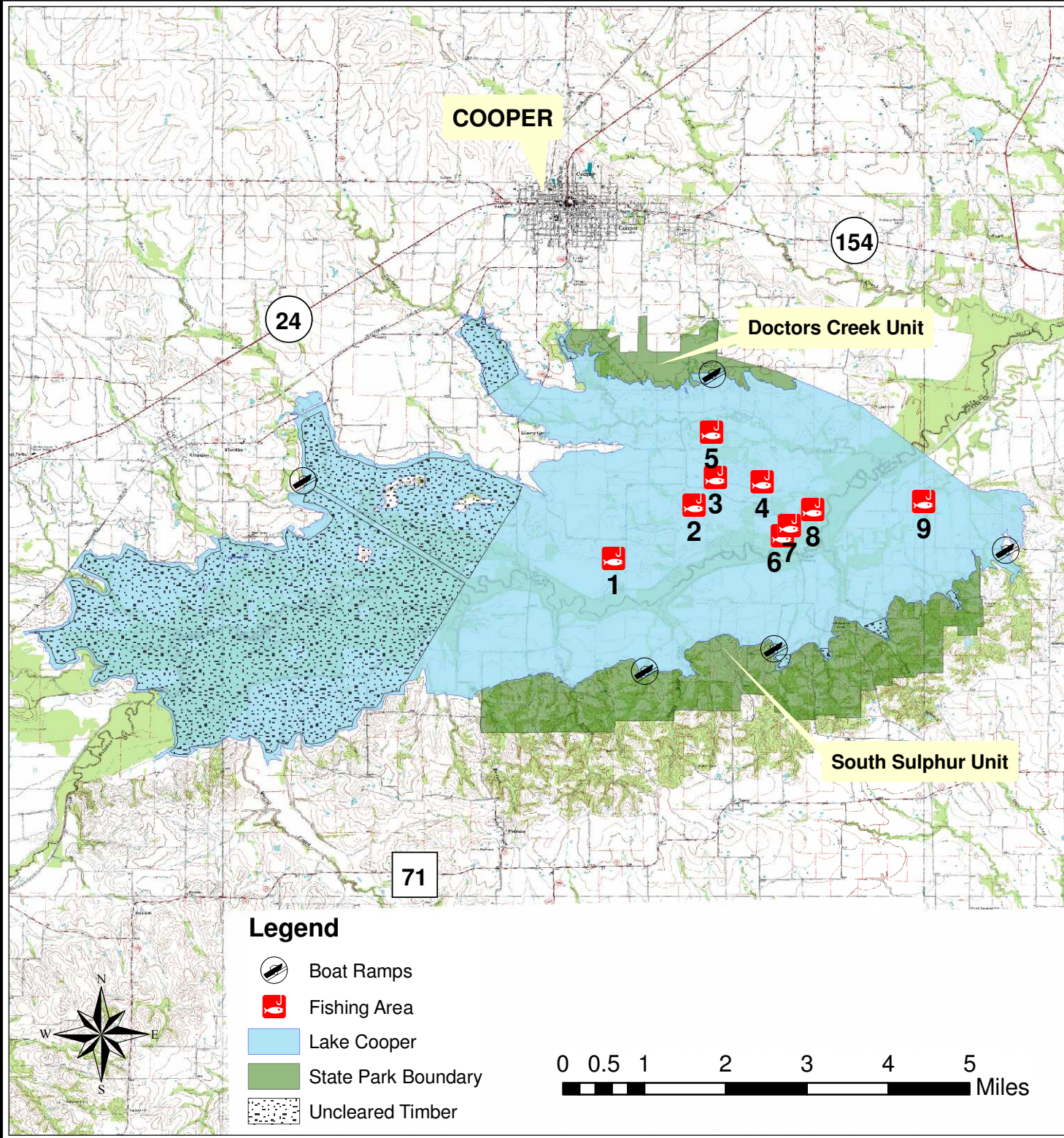
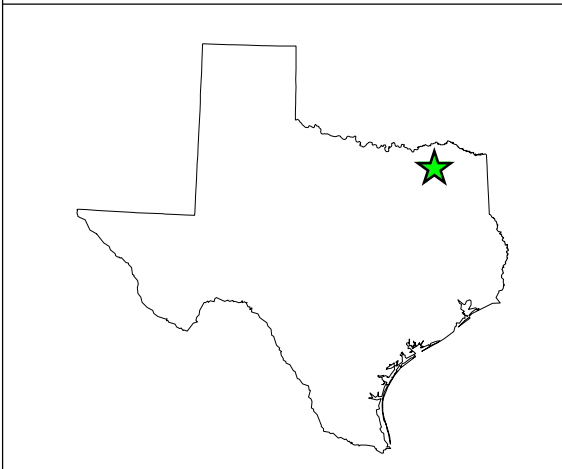


Lake Cooper Fishing Areas



WAYPOINT	LAT	LONG
1	33° 18.617'	95° 40.834'
2	33° 19.188'	95° 39.975'
3	33° 19.484'	95° 39.746'
4	33° 19.435'	95° 39.249'
5	33° 19.968'	95° 39.787'
6	33° 18.861'	95° 39.034'
7	33° 18.967'	95° 38.956'
8	33° 19.139'	95° 38.706'
9	33° 19.224'	95° 37.522'



Inland Fisheries Division

Prepared 18 August 2009 by:
 Monte Brown, Aaron Jubar, & Kevin Storey
 Inland Fisheries District 3B (903) 593-5077

Texas Parks and Wildlife Department

NOTE: THIS MAP IS FOR REFERENCE ONLY
 The requestor must be aware of data conditions and ultimately bear responsibility for the appropriate use of the information with respect to possible errors, original map scale, collection methodology, currency of data, and other conditions specific to certain data.

In accordance with Texas State Depository Law, this publication is available at the Texas State Publications clearinghouse and/or Texas Depository Libraries.

© 2009 Texas Parks and Wildlife Department
 PWD MP T3200-1449 (08/09)